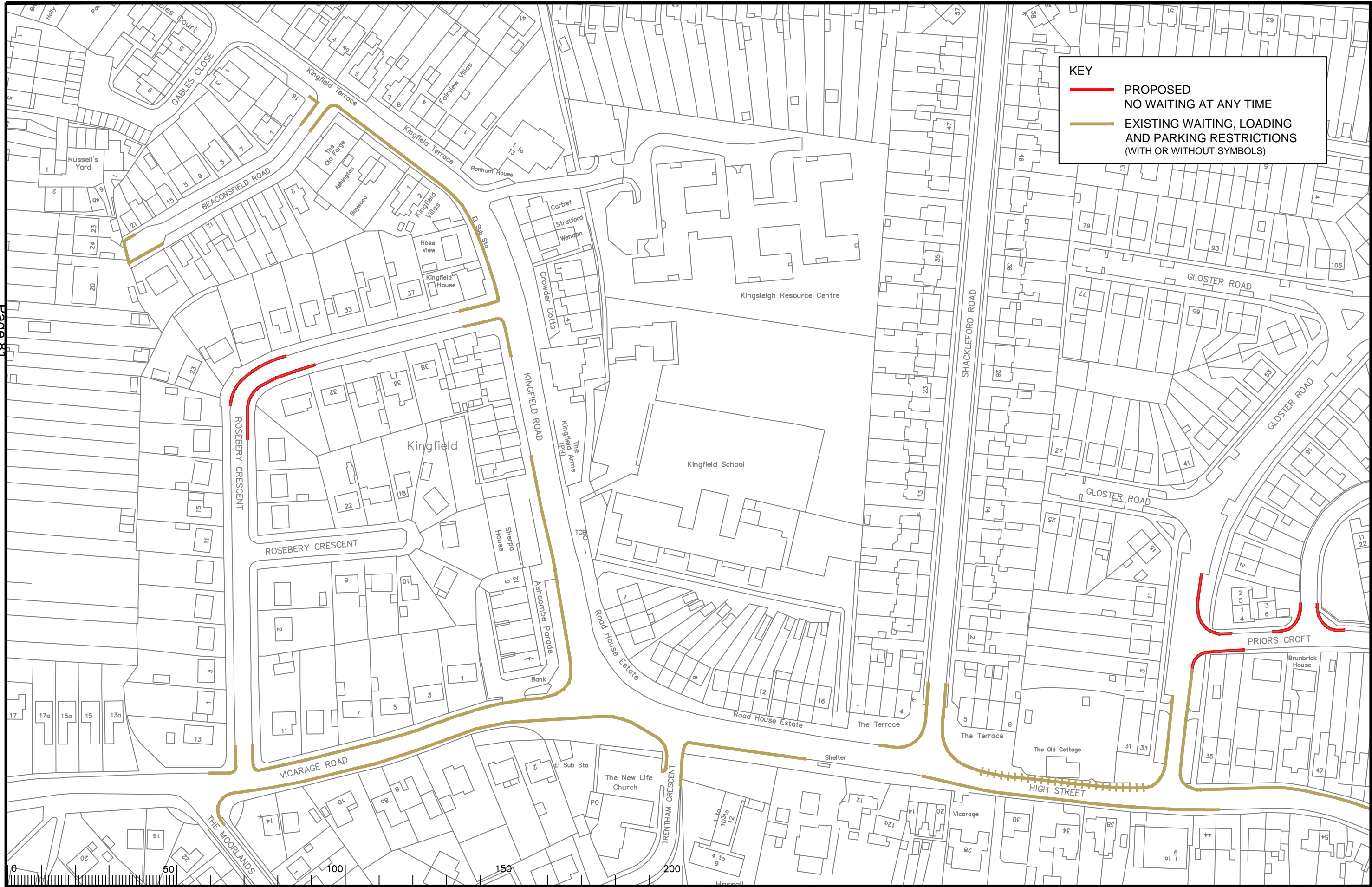


**KEY**

- PROPOSED NO WAITING AT ANY TIME
- EXISTING WAITING, LOADING AND PARKING RESTRICTIONS (WITH OR WITHOUT SYMBOLS)



Notes

Rev.	Description	Drwn	Sig.	Date	Chkd	Sig.	Date	Appr	Sig.	Date
A	WAITING RESTRICTIONS AMENDED	SDC	SDC	29.07.08	SDC	SDC	29.07.08	TPC	TPC	29.07.08
B	RESTRICTIONS AMENDED	CAH	CAH	01.11	JAR	JAR	01.11	TPC	TPC	01.11
C	RESTRICTIONS AMENDED	CAH	CAH	11.11	AH	AH	11.11	TPC	TPC	11.11
D	RESTRICTIONS AMENDED	CAH	CAH	11.15	PW	PW	11.15	RH	RH	11.15

Drwn	Sig.	Date	Chkd	Sig.	Date	Appr	Sig.	Date
SDC	SDC	29.07.08	SDC	SDC	29.07.08	TPC	TPC	29.07.08
CAH	CAH	01.11	JAR	JAR	01.11	TPC	TPC	01.11
CAH	CAH	11.11	AH	AH	11.11	TPC	TPC	11.11
CAH	CAH	11.15	PW	PW	11.15	RH	RH	11.15

North Point

Checked by	Sig.	Date
originator	AM	05/05
Approved by	TPC	05/05

Project: OLD WOKING DPE WOKING

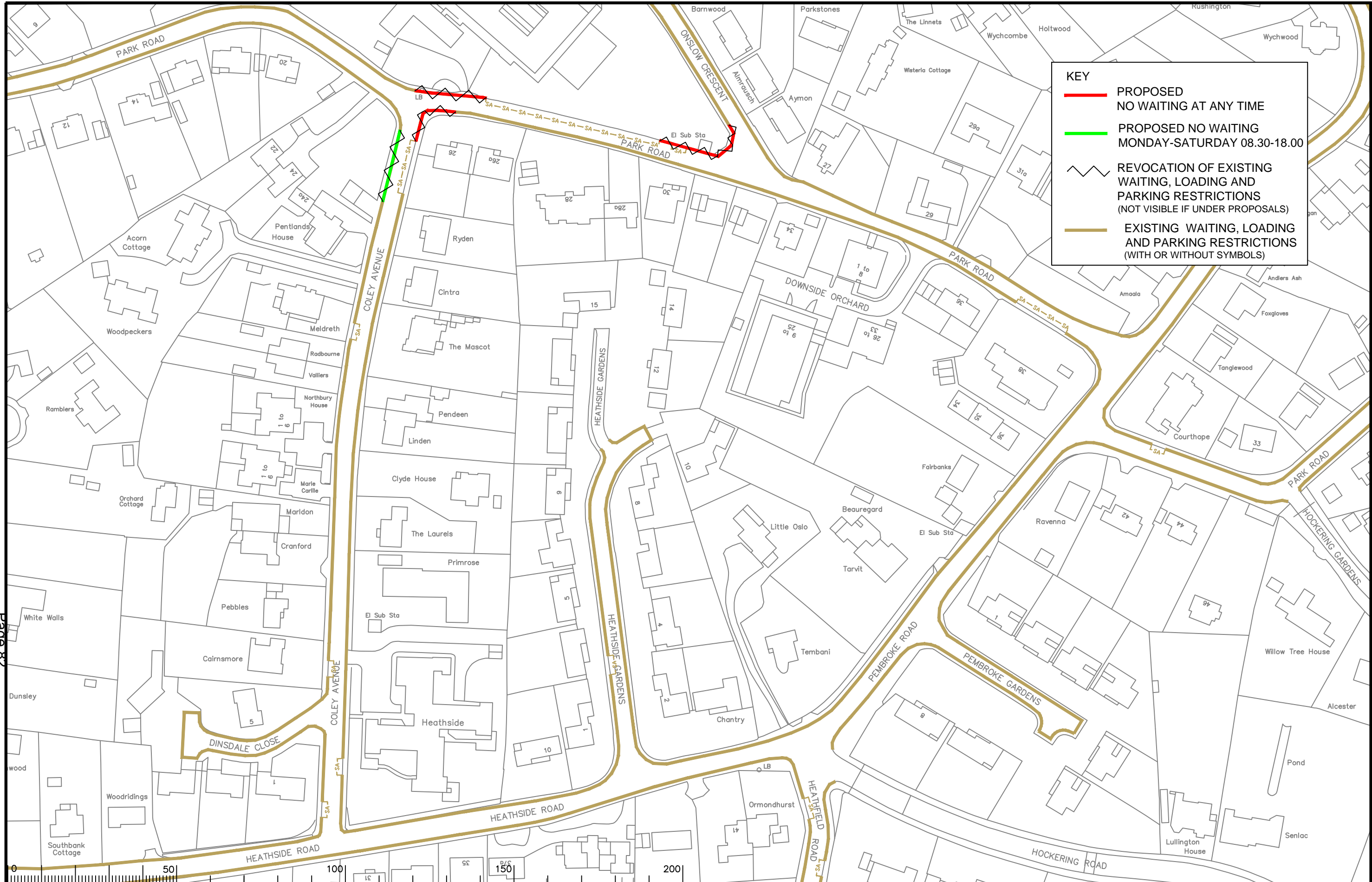
Implemented Traffic Orders

Scale: 1:1250

SHEET 30 of 30

**SURREY COUNTY COUNCIL**  
Sustainable Development

Project No. 3282WOK  
Contract Sheet No. 20030  
Drawing No. 20030  
Rev. D  
Classification: PROPOSAL



**KEY**

- PROPOSED NO WAITING AT ANY TIME
- PROPOSED NO WAITING MONDAY-SATURDAY 08.30-18.00
- ⚡ REVOCATION OF EXISTING WAITING, LOADING AND PARKING RESTRICTIONS (NOT VISIBLE IF UNDER PROPOSALS)
- EXISTING WAITING, LOADING AND PARKING RESTRICTIONS (WITH OR WITHOUT SYMBOLS)

Notes

Rev.	Description	Drwn	Sig.	Date	Chkd	Sig.	Date	Appr	Sig.	Date
A	Changes to Park Road, Coley Avenue, Heathside Gardens	SDC	SDC	12.12.06	GT	GT	12.12.06	TPC	TPC	12.12.06
B	WAITING RESTRICTIONS & LINETYPES AMENDED	AJM	AJM	18.12.07	KP	KP	18.12.07	TPC	TPC	18.12.07
C	RESTRICTIONS AMENDED	CAH	CAH	11.11	PW	PW	11.11	TPC	TPC	11.11
D	RESTRICTIONS AMENDED	CAH	CAH	2013	JAR	JAR	2013	RH	RH	2013
E	RESTRICTIONS AMENDED	CAH	CAH	05.13	JAR	JAR	05.13	RH	RH	05.13
F	RESTRICTIONS AMENDED	CAH	CAH	08.14	PW	PW	08.14	RH	RH	08.14
G	RESTRICTIONS AMENDED	CAH	CAH	11.15	PW	PW	11.15	RH	RH	11.15

Rev.	Description	Drwn	Sig.	Date	Chkd	Sig.	Date	Appr	Sig.	Date
A	Changes to Park Road, Coley Avenue, Heathside Gardens	SDC	SDC	12.12.06	GT	GT	12.12.06	TPC	TPC	12.12.06
B	WAITING RESTRICTIONS & LINETYPES AMENDED	AJM	AJM	18.12.07	KP	KP	18.12.07	TPC	TPC	18.12.07
C	RESTRICTIONS AMENDED	CAH	CAH	11.11	PW	PW	11.11	TPC	TPC	11.11
D	RESTRICTIONS AMENDED	CAH	CAH	2013	JAR	JAR	2013	RH	RH	2013
E	RESTRICTIONS AMENDED	CAH	CAH	05.13	JAR	JAR	05.13	RH	RH	05.13
F	RESTRICTIONS AMENDED	CAH	CAH	08.14	PW	PW	08.14	RH	RH	08.14
G	RESTRICTIONS AMENDED	CAH	CAH	11.15	PW	PW	11.15	RH	RH	11.15

North Point

Based upon the Ordnance Survey mapping with the permission of the Controller of Her Majesty's Stationery Office. Crown copyright. Unauthorised reproduction infringes Crown copyright and may lead to prosecution or civil proceedings. Surrey County Council LA 076872 1996.

Drawn by SDC Sig. SDC Date 05/05

Checked by AM Sig. AM Date 05/05

Approved by ADVERTISED Sig. TPC Date 05/05

Project: WOKING DPE WOKING

Drawing: IMPLEMENTED TRAFFIC ORDERS

Project No. 3282/WOK

Contract Sheet No. 20087

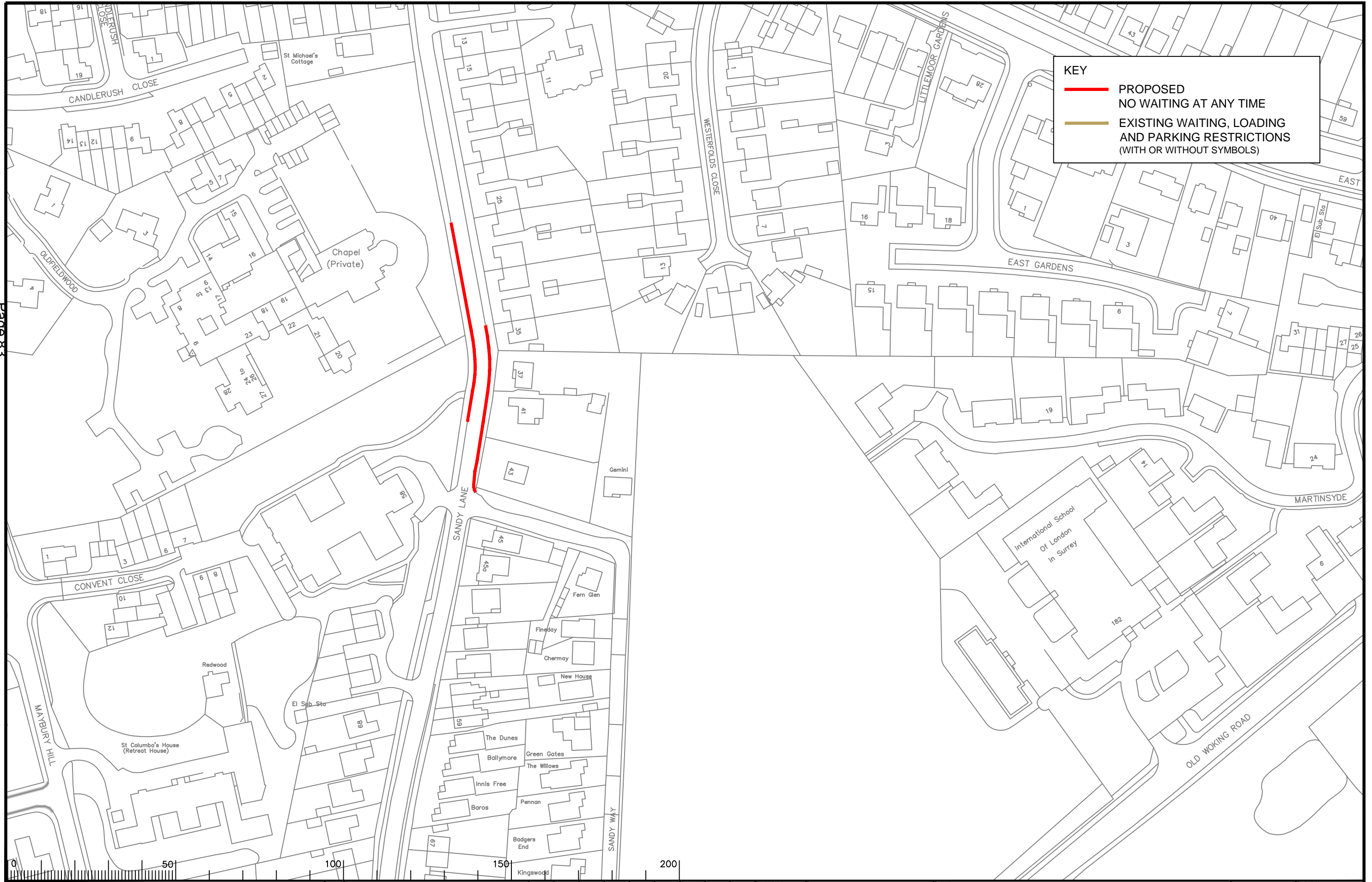
Rev. G

Classification: PROPOSAL

SURREY COUNTY COUNCIL  
Sustainable Development  
Head of Transport  
Roadway Chief Engineering Officer

SHEET OF





**KEY**

- PROPOSED NO WAITING AT ANY TIME
- EXISTING WAITING, LOADING AND PARKING RESTRICTIONS (WITH OR WITHOUT SYMBOLS)

Notes

Rev.	Description	Drwn	Sig.	Date	Chkd	Sig.	Date	Appr	Sig.	Date

Rev.	Description	Drwn	Sig.	Date	Chkd	Sig.	Date	Appr	Sig.	Date

North Point

Based upon the Ordnance Survey mapping with the permission of the Controller of Her Majesty's Stationery Office. Crown copyright. Unauthorised reproduction infringes Crown copyright and may lead to prosecution or civil proceedings. Surrey County Council LA 078872 1996.

Drawn by	CAH	Sig.	CAH	Date	11.15
Checked by	PW	Sig.	PW	Date	11.15
Approved by	RH	Sig.	RH	Date	11.15

Project

WOKING DPE  
WOKING

Drawing

IMPLEMENTED TRAFFIC ORDERS

SHEET OF

**SURREY COUNTY COUNCIL**  
Sustainable Development  
Head of Transportation  
LA 078872 1996

Project No.	3282/WOK
Contract Sheet No.	-
Drawing No.	20113
Rev.	-
Classification	PROPOSAL

This page is intentionally left blank